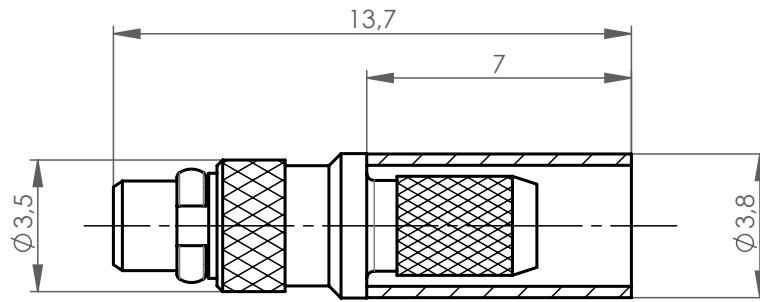


M 1:1



Mechanical characteristics
cable group

Mechanische Eigenschaften
Kabelgruppe

G 7: KX 22A, KX 3B,
MRC 100 FLEX (0.48L/1.5AF) Draka
RG-174/U, RG-188A/U, RG-316/U

interface dimensions acc. to
assembly code
centre conductor
outer conductor
mating life

Steckgesicht nach
Montageanleitung
Innenleiter
Außenleiter
Steckzyklen

IEC 61169-52
C3216
crimp
crimp
≥ 500

Components
centre contact
outer contact
snap ring
crimp ferrule
insulator



Bauteile
Innenkontakt
Außenkontakt
Schnapping
Crimprohr
Isolierung

| | |
|-----------------------------|----------------------------|
| Materials / Material | Finish / Oberfläche |
| CuZn39Pb3 | Cu1Ni2Au1,27 |
| CuZn39Pb3 | NiP-Au |
| CuBe2 | NiP-Au |
| Cu SF w | Ni5Au0,2 |
| PTFE | |

Environmental
RoHS compliant

Umgebung
RoHS konform

2011/65/EU

| | | | | | | | |
|------------------------|----------------------------------|----------------|--|---|----------------------------|---------------------------|--|
| Änd./ rev. index | Änderungs-Nr. / revision code | Datum/ date | Name/ name | Datum/ date | Name/ name | Gewicht/ weight [g] | |
| | | | gez./ drawn | 12.07.2018 | GB | | |
| | | | gepr./ appr. | 25.07.2018 | VM | ca./approx. | |
| | | | Maßstab/ scale | Benennung/ title | | |  |
| | | | 5:1 (1:1) | MMCX Straight Plug MMCX-Kabelstecker | | | |
| | | | untol. Maße/ dim. without tolerances according to | Untert./ doc. type | Zeichnungsnr./ drawing no. | |  Maße/ dimensions: mm |
| | | | K | J01340B0141 | | | |
| | | | Ersatz für/ replaces | | | Original : DIN A4 | |
| | | | | | Blatt/ sheet 1 von/ of 1 | | |