

Mechanical characteristics
interface dimensions acc. to panel piercing

Components
centre contact
outer contact
other metal parts
serrated lock washer
insulator

Electrical characteristics
impedance

Environmental
RoHS compliant

Mechanische Eigenschaften
Steckgesicht nach Montagebohrung

Bauteile
Innenkontakt
Außenkontakt
sonstige Metallteile
Fächerscheibe
Isolierung

Elektrische Eigenschaften
Wellenwiderstand

Umgebung
RoHS konform

IEC 61169-8
Z004

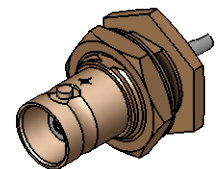
Materials / Material
CuNi1Pb1P (C97)
CuZn39Pb3
CuZn39Pb3
CuSn6
PTFE



Finish / Oberfläche
NiP Au
Cu2Ni5
Cu2Ni5
Cu2Ni5

50 Ω

2011/65/EU

M 1:1



| | | | | | | | |
|---|-------------------------------|-------------|------------|---|-------------|----------------------------|---------------------|
| Änd./ rev. index | Änderungs-Nr. / revision code | Datum/ date | Name/ name | gez./ drawn | Datum/ date | Name/ name | Gewicht/ weight [g] |
| | | | | | 20.02.2018 | MA | |
| | | | | gepr./ appr. | 28.03.2018 | HR | ca./approx. 16,36 |
| Maßstab/ scale | | | | Benennung/ title | | | |
| 2:1 | | | | BNC Bulkhead Socket BNC-Einbaubuchse | | | |
| untol. Maße/ dim. without tolerances according to | | | | Untert./ doc. type | | Zeichnungsnr./ drawing no. | |
| | | | | K | | J01001A1225 | |
| | | | | Ersatz für/ replaces | | | |
| | | | |  | | | |
| | | | | | | | |
| | | | |  Maße/ dimensions: mm Original : DIN A4 Blatt/ sheet 1 von/ of 1 | | | |