

## PLPO TETRA/380-470

Indoor or outdoor linearly polarized patch antennas for wall mounting

### DESCRIPTION

- > Low-profile antenna for the 380 - 470 MHz band.
- > Covers 90 MHz with a radiation of approx. 4 dBi.
- > The antenna is available with a snap-fit wall mounting bracket.

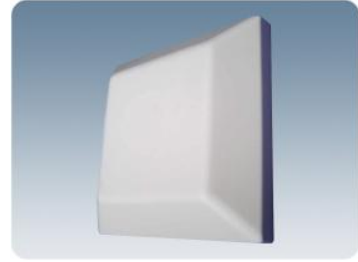
### ORDERING DESIGNATIONS

TYPE	FREQUENCY	PRODUCT NO.
PLPO TETRA/380-470	380 - 470 MHz	752.01.05.00

### SPECIFICATIONS

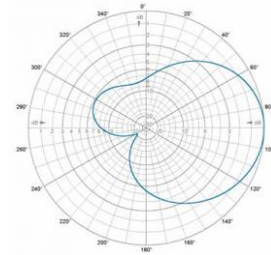
ELETRICAL	
MODEL	PLPO TETRA/380-470
ANTENNA TYPE	Linearly polarized low-profile antenna
FREQUENCY	380 - 470 MHz
IMPEDANCE	Nom. 50 Ω
POLARIZATION	Linear (Vertical and Horizontal)
GAIN	Approx. 4 dBi
BANDWIDTH	≥ 90 MHz
HALF-POWER BEAMWIDTH	E-plane 120° H-plane 130°
SWR	≤ 2
MAX. POWER	50 W
IM3	≤ -140 dBc (2x Tx @ 37 dBm)
SAR Testing (Specific Absorption Rate)	EN 50385:2002; 7.19 W Touch Safe Level

MECHANICAL	
CONNECTOR	N-Socket on 150 mm pigtail or antenna back
MATERIALS	Aluminium, PTFE Radome: ABS fire retardant, white RAL 6014
SIZE (L x W x H)	Approx. 292 x 292 x 76 mm / 11.50 x 11.50 x 2.99 in.
WEIGHT	Approx. 0.4 kg / 0.88 lb.
MOUNTING	Click mounting on stainless steel plate A2-70
IP-RATING	IP65

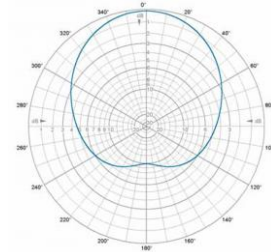


### PATTERN

#### TYPICAL RADIATION PATTERN (E-PLANE)



#### TYPICAL RADIATION PATTERN (H-PLANE)



### DIMENSIONS

